



BERKSHIRE HATHAWAY | Stein & Summers Real Estate
COMMERCIAL SERVICES



Available for Lease

7,000 Sq. Ft. of Retail Space

**2722 S. Leonard Rd.
St. Joseph, Missouri**

www.stjoseph.net/cb/2722sleonard.pdf

Raymond A. Sisson, CCIM
Berkshire Hathaway Home Services, Stein & Summers Real Estate
1007 E St. Maartens, St. Joseph, Missouri 64506
Business (816) 233-8780 Cell (816) 390-7478
E-mail: raysisson@stjoseph.net
Web Site: www.raysisson.net



Index

www.stjoseph.net/cb/2722sleonard.pdf

I) Overview	Page
a) Description	3
II) Property	
a) Feature Sheet	4
b) Floor Plan	5
c) Site Plan	6
III) Photos	
a) Exterior	7
IV) St. Joseph, Missouri	
a) Demographics - Pending	8-9
b) Drive Time Map	10
V) Miscellaneous	
a) Community Internet Sites	11



Description

- 2722 S. Leonard, St. Joseph, Missouri offers 7,000 Sq. Ft. available for sale.
- 5,700 Sq. Ft. is retail space and 1,300 Sq. Ft. is warehouse
- Flood Zone: None
- Zoning: C-1
- Taxes: \$4,758
- Dock Door: 1
- Drive in Door: 1
- Building contains 60' archery range
- For Sale: \$240,000.00
- Utilities:
 - Electrical: KCP&L
 - Gas: Missouri Gas Energy
 - Water: Missouri American Water
 - Sewer: City of St. Joseph

Property Feature Sheet



2722 S. Leonard, St. Joseph, MO

Available

Building: 7,000 Sq. Ft. of which
5,700 Sq. Ft. is retail space
1,300 Sq. Ft. is warehouse

Lot: 1.27 Acres

Dock Door: 1

Drive in Door: 1

For Sale: \$240,000.00

Left turn allowed: Yes

County: Buchanan

Water: Missouri American Water Co.

Gas: Missouri Gas Energy

Electricity: KCP&L

Sewer: City of St. Joseph

Directions: From I-29, exit on hwy 169 South.
Go south on 169 to Leonard Rd. Turn
north on Leonard road , continue to
property on west side of Leonard Rd.

Zoning: C-1

Taxes 2018: \$4,758.00

Flood Zone: None

Area: Building backs up to I-29 on east side
of I-29

Access: Leonard Road

Available: At Closing

Costar#: 14243370

MLS #: 2136841

Web Site: www.stjoseph.net/cb/2722sleonard.pdf

Raymond A. Sisson, CCIM

Berkshire Hathaway Home Services, Stein & Summers Real Estate

1007 E St. Maartens, St. Joseph, Missouri 64506

Business (816) 233-8780 Cell (816) 390-7478

E-mail: raysisson@stjoseph.net

Web Site: www.raysisson.net



Marketing Packet

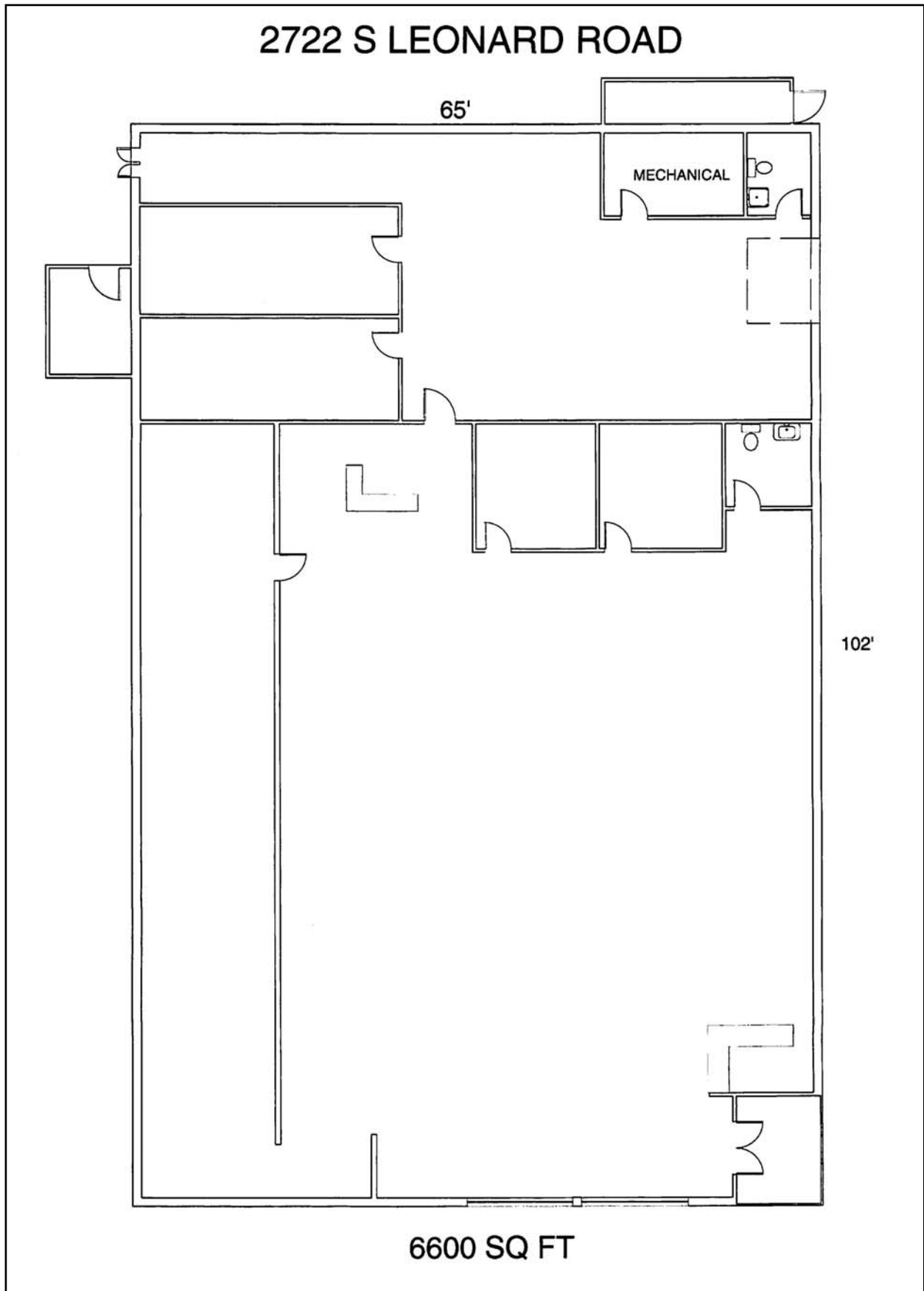
The statements and figures presented herein, while not guaranteed, are secured from sources we believe authoritative. Subject to prior sale, lease, withdrawal, and price changes without notice.



BERKSHIRE HATHAWAY | Stein & Summers Real Estate
COMMERCIAL SERVICES

FLOOR PLAN

2722 S LEONARD ROAD



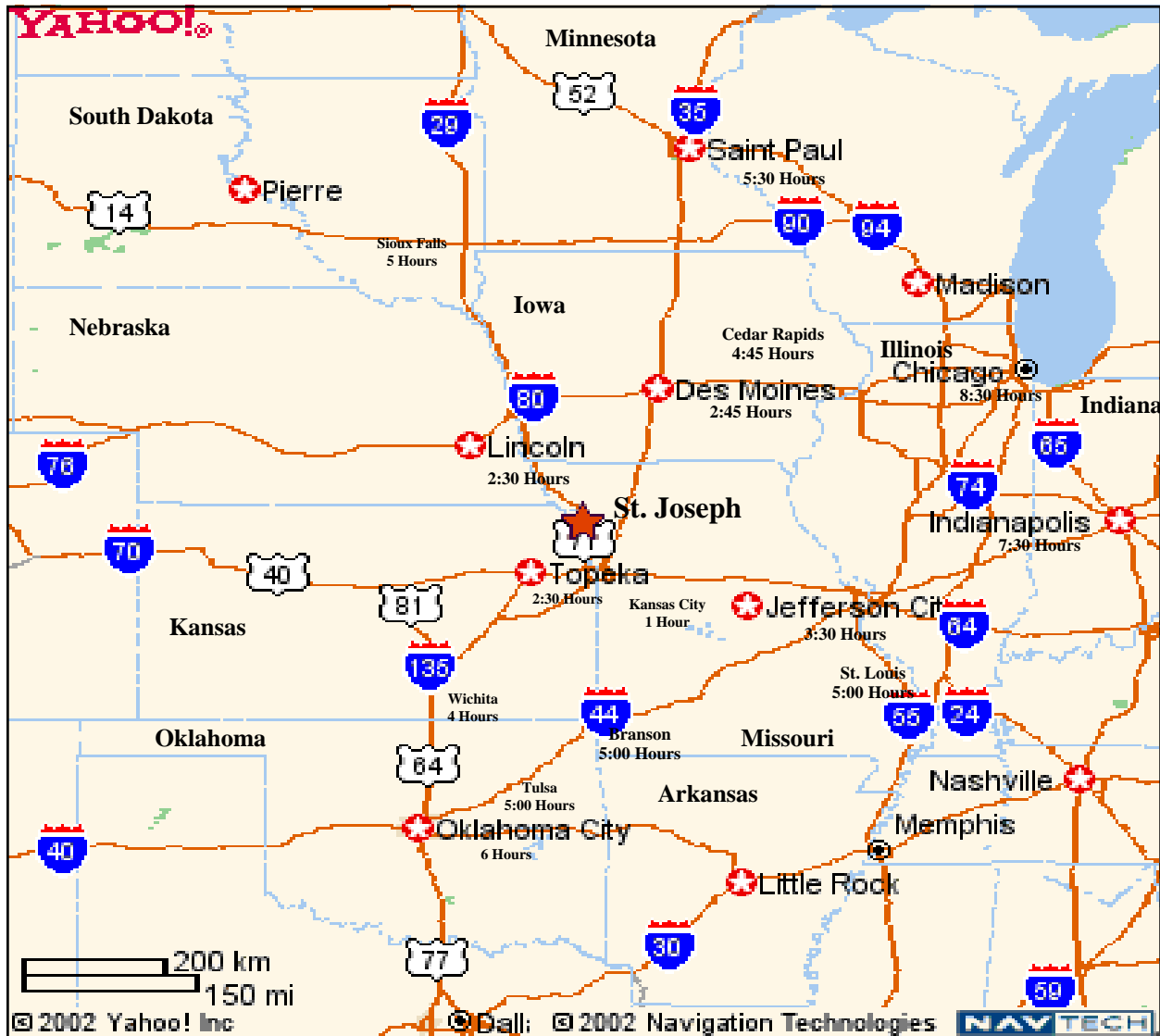
SITE PLAN



PHOTOS



Drive Time Map



Drive Times to St. Joseph, Missouri are all approximate.

Raymond A. Sisson, CCIM
Berkshire Hathaway Home Services, Stein & Summers Real Estate
1007 E St. Maartens, St. Joseph, Missouri 64506
Business (816) 232-2000 Fax (816) 233-8204
E-mail: raysisson@stjoseph.net
Web Site: www.raysisson.net



COMMUNITY INTERNET SITES

St. Joseph Metro Chamber

www.saintjoseph.com

City of St. Joseph

www.ci.st-joseph.mo.us

St. Joseph Convention and Visitors Bureau

www.stjomo.com

Demographic Web Site:

www.nwmoinfo.org

Buchanan County

www.co.buchanan.mo.us

St. Joseph News Press

www.newspressnow.com

St. Joseph School District

www.sjsd.k12.mo.us

Missouri Western State University

www.missouriwestern.edu

Albrecht-Kemper

www.albrecht-kemper.org

Allied Arts Council

www.stjoearts.org

St. Joseph Museum

www.stjosephmuseum.org

Areaguide Saint Joseph

<http://saintjosephmo.areaguides.net>

Patee House Museum

www.ponyexpressjessejames.com

